



Ottery St. Mary Public Consultation

1

We are very pleased that you have attended this consultation to view and comment on draft proposals to enhance Ottery St Mary Town Centre.

We would like your help to identify preferred enhancements to support the future development of Ottery St. Mary.

If you have any questions, please ask the members of the consultation team who you will see here today.



Background

Ottery St Mary Town Council has been working with expert consultants Callidus and LHC Design to analyse transport and travel within the town and develop potential future enhancements.

Steps which have been undertaken so far:

Stage 1:

Baseline data collection, Stakeholder engagement and baseline analysis to understand the problems and issues

Stage 2:

Create draft strategies and initiatives that address identified problems, and engage with stakeholders and the public - This is the current stage we are at today.

Stage 3:

Following public engagement, designs will be developed leading to future funding and implementation.

Please have your say today

Instruction on what to do:

- Please view the display boards and talk the members of the consultation team
- Provide feedback on the available forms or online using this QR link to our survey:



- Honest and positive feedback is welcome

Housekeeping:

- In the event of an emergency please leave the building via the main entrance and listen for instructions

How to keep in touch:

- The following email address can be used to provide any further feedback you may have after today's event admin@otterystmary-tc.gov.uk





Ottery St. Mary Public Consultation

Prioritising Transport Schemes

How we have prioritised transport schemes and measures for Stage 2:

Previously, as part of Stage 1, Stakeholders in Ottery were invited to tell us about the problems, issues and opportunities for transport and movement in Ottery.

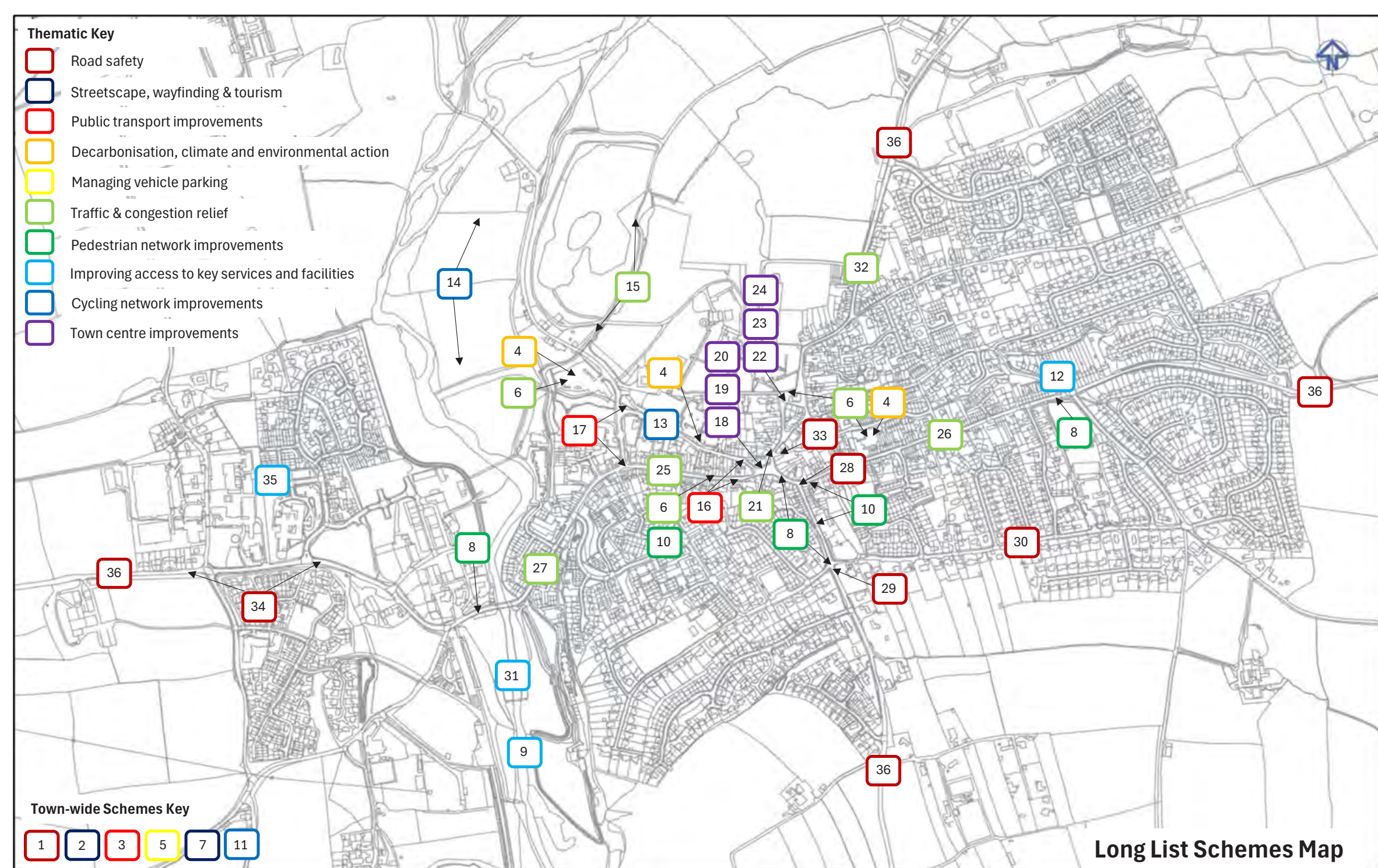
Priorities for transport interventions were identified and have been used to direct the work in Stage 2. An overarching strategy has been developed setting out high level aims and objectives.

From these priorities we developed a 'long list' of potential scheme options and measures.

An appraisal framework was developed to evaluate options and scheme designs qualitatively. These have been refined in conjunction with the Town Council into a 'short list' of prioritised schemes and potential 'quick wins' to enhance transport and movement within the town.

Prioritised measures are shown below as highlighted in the appraisal matrix and further details of the scheme designs are provided across the remaining boards for you to comment on.

Long List Schemes:



Reference map.

OTTERY ST MARY

TOP PRIORITIES

Attached to your guide are 3 sticker dots. Please colour your feedback for Table 1 & 2, select the top 3 priorities for outcomes that you have for this study onto the right hand side of the table below. Feel free to use the notes adjacent to inspire you.

If you think there are any that we have missed, please add them to the bottom of the list. Any improvements made will be subject to gathering sufficient funding so we want to make sure we target the most important aspects.

- Streetscape**: Overall appearance/layout of streets and spaces between buildings, ease of navigation, pavement widths. *more paving work*
- Street Furniture**: Benches, planters, trees, play equipment, canopies, signage/branding, wayfinding features. *more outdoor seating in town*
- Parking**: Including management, amount, location, zones, spaces, waiting limits.
- Cycle Infrastructure**: Cycle routes, cycle parking, locations. *more cycle lanes/wayside cycle lanes*
- Public transport**: Services, stops, accessibility, routes, frequency, ease of information. *we need more frequent bus routes to and from Silver Street*
- Green Infrastructure & Biodiversity**: Trees, plants, wildlife, habitat, water, green links, soft spaces.
- Materials**: Surfaces, quality, character, robustness, palette, amounts.
- Lighting**: Types, amount, location, low level lighting, light features, general street lighting. *more lighting in night + more light down in town centre*
- Events**: Activities, meeting places, community gatherings, markets, performances, location, art.
- Road Safety**: Pedestrians, cyclists and cars, junctions, visibility, crossings, reduced speeds, traffic calming, signage.
- Security**: Lighting, routes, overlooking, plot boundaries, access, CCTV.
- Maintenance**: On both highways and the rest of the public realm, potholes, drainage, kerbs, lighting, signage etc.
- Climate Emergency**: Pollution, reduced carbon, electric charging, easy active transport (eg cycling, walking), awareness initiatives.
- Road Improvements**: Junction sizes, traffic signal controls, lane markings, circulation changes.
- Others**: Is there anything else you think we might have overlooked? *Crack in the park*

Priorities consultation.

Scheme Number	Theme	Measure (Prioritised measures/schemes are highlighted)	Transport sustainability	Accessibility	Design Quality	Road safety	Effectiveness	Cost	Implementation	Political acceptability	Environment (local)	Environment (wider)	Social inclusion	Heritage and culture	Economic (local)	Economic (wider)
1	Road safety	20mph Zone and associated measures	++	-/+	+	++	++	++	++	++	++	++	++	++	++	++
2	Streetscape, wayfinding and tourism	Wayfinding Upgrade for Ottery St Mary	++	++	++	++	++	++	++	++	++	++	++	++	++	++
3	Public transport improvements	Reinstating Evening and Sunday bus services	++	++	++	++	++	++	++	++	++	++	++	++	++	++
4	Decarbonisation, climate and environmental action	Install rapid EV charging points	++	-/+	++	++	++	++	++	++	++	++	++	++	++	++
5	Managing vehicle parking	Controlled parking zones for residents	++	-/+	++	++	++	++	++	++	++	++	++	++	++	++
6	Traffic & congestion relief	Car clubs and sustainable travel promotion	++	++	++	++	++	++	++	++	++	++	++	++	++	++
7	Streetscape, wayfinding and tourism	Mobility hubs for Ottery St Mary	++	++	++	++	++	++	++	++	++	++	++	++	++	++
8	Pedestrian network improvements	New controlled pedestrian crossings	++	++	++	++	++	++	++	++	++	++	++	++	++	++
9	Improving access to key services and facilities	Southern pedestrian route to King's School	++	++	++	++	++	++	++	++	++	++	++	++	++	++
10	Pedestrian network improvements	New informal pedestrian crossing facilities	++	++	++	++	++	++	++	++	++	++	++	++	++	++
11	Cycling network improvements	New cycle parking facilities	++	++	++	++	++	++	++	++	++	++	++	++	++	++
12	Improving access to key services and facilities	Safer walking routes to OSM Primary School	++	++	++	++	++	++	++	++	++	++	++	++	++	++
13	Cycling network improvements	Contra-flow cycle lane on Hind Street	++	++	++	++	++	++	++	++	++	++	++	++	++	++
14	Cycling network improvements	Tipton St John to Fenton Cycle Route	++	++	++	++	++	++	++	++	++	++	++	++	++	++
15	Traffic and congestion relief	Town Centre Road Bypass	++	++	++	++	++	++	++	++	++	++	++	++	++	++
16	Public transport improvements	Relocation of town centre bus stops	++	++	++	++	++	++	++	++	++	++	++	++	++	++
17	Public transport improvements	Alternative locations for the layover of buses	++	++	++	++	++	++	++	++	++	++	++	++	++	++
18	Town centre improvements	Broad Street/Town Square Option 1	++	++	++	++	++	++	++	++	++	++	++	++	++	++
19	Town centre improvements	Broad Street/Town Square Option 2	++	++	++	++	++	++	++	++	++	++	++	++	++	++
20	Town centre improvements	Broad Street/Town Square Option 3	++	++	++	++	++	++	++	++	++	++	++	++	++	++
21	Traffic and congestion relief	Silver Street (Yellow Box Area) Enhancement	++	++	++	++	++	++	++	++	++	++	++	++	++	++
22	Town centre improvements	Silver Street Enhancement: Option 1	++	++	++	++	++	++	++	++	++	++	++	++	++	++
23	Town centre improvements	Silver Street Enhancement: Option 2	++	++	++	++	++	++	++	++	++	++	++	++	++	++
24	Town centre improvements	Silver Street Enhancement: Option 3	++	++	++	++	++	++	++	++	++	++	++	++	++	++
25	Traffic and congestion relief	Mill Street (east) Corridor Scheme	++	++	++	++	++	++	++	++	++	++	++	++	++	++
26	Traffic and congestion relief	Yonder Street Corridor Scheme	++	++	++	++	++	++	++	++	++	++	++	++	++	++
27	Traffic and congestion relief	Mill Street (west) Corridor Scheme	++	++	++	++	++	++	++	++	++	++	++	++	++	++
28	Road safety	Jesus Street/Tip junction improvement scheme	++	++	++	++	++	++	++	++	++	++	++	++	++	++
29	Road safety	Sidmouth Road/Tip Hill pedestrian crossing scheme	++	++	++	++	++	++	++	++	++	++	++	++	++	++
30	Road safety	Longdog Lane traffic calming scheme	++	++	++	++	++	++	++	++	++	++	++	++	++	++
31	Improving access to key services and facilities	Improving access to the Riverside area	++	++	++	++	++	++	++	++	++	++	++	++	++	++
32	Traffic and congestion relief	North Street Relief Scheme	++	++	++	++	++	++	++	++	++	++	++	++	++	++
33	Road safety	Brook Street one-way system (Silver Street to Lovell Garage)	++	-/+	++	++	++	++	++	++	++	++	++	++	++	++
34	Road safety	Barrack Road Speed Reduction Measures	++	-/+	++	++	++	++	++	++	++	++	++	++	++	++
35	Improving access to key services and facilities	Improving pick up/drop off facilities at King's School	++	++	++	++	++	++	++	++	++	++	++	++	++	++
36	Road safety	Gateway features for main roads into Ottery St Mary	++	++	++	++	++	++	++	++	++	++	++	++	++	++



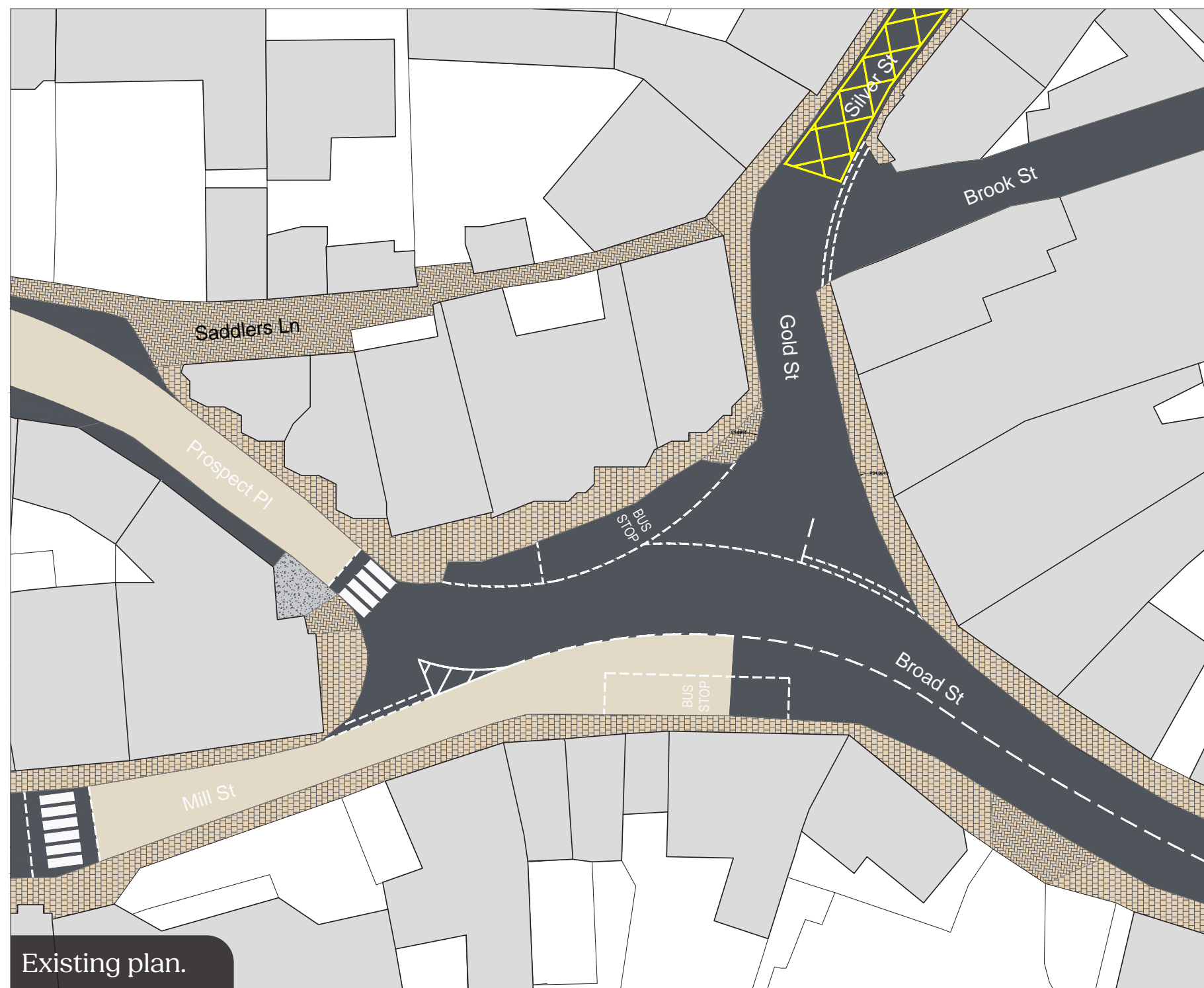
Scheme scoring system.



Ottery St. Mary Public Consultation

Town Square Enhancements

Existing Layout:



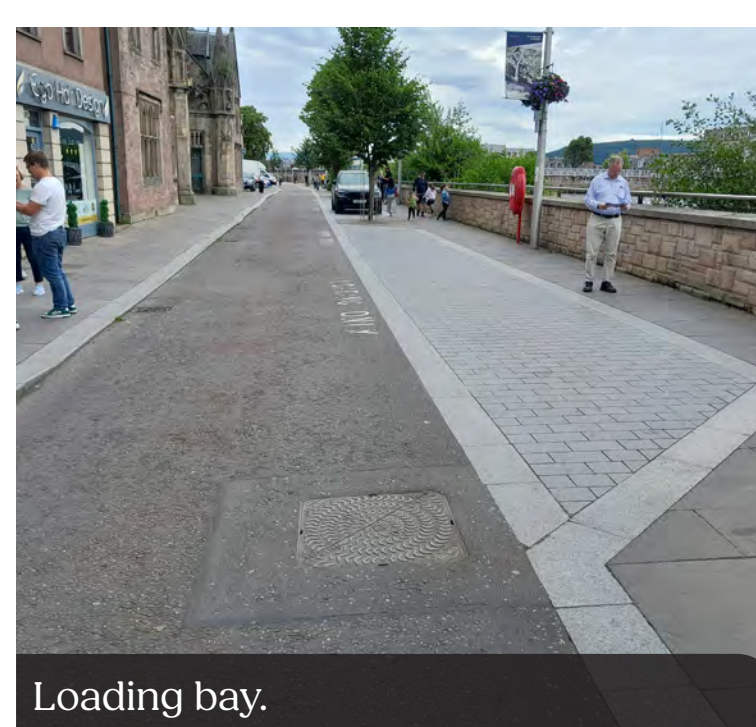
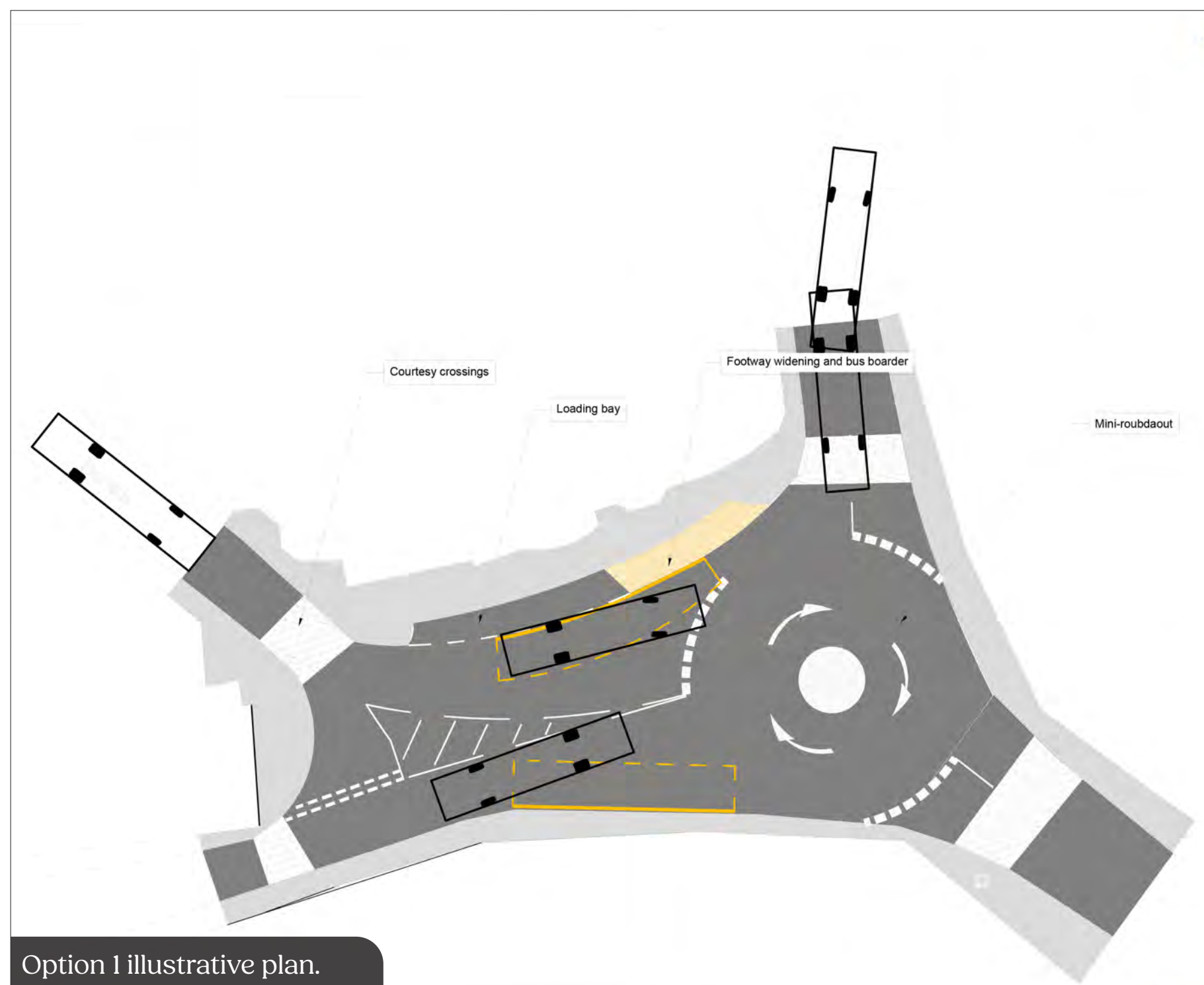
Issues to Address:

- Car dominance
- Pedestrian movements/ safety
- Bus stops
- Waiting and loading
- Streetscape quality

Aims and Objectives:

- Balance user priorities
- Provide better bus access
- Maintain free flow of traffic
- Increase footway space
- Enhance visual appearance

Option 1:

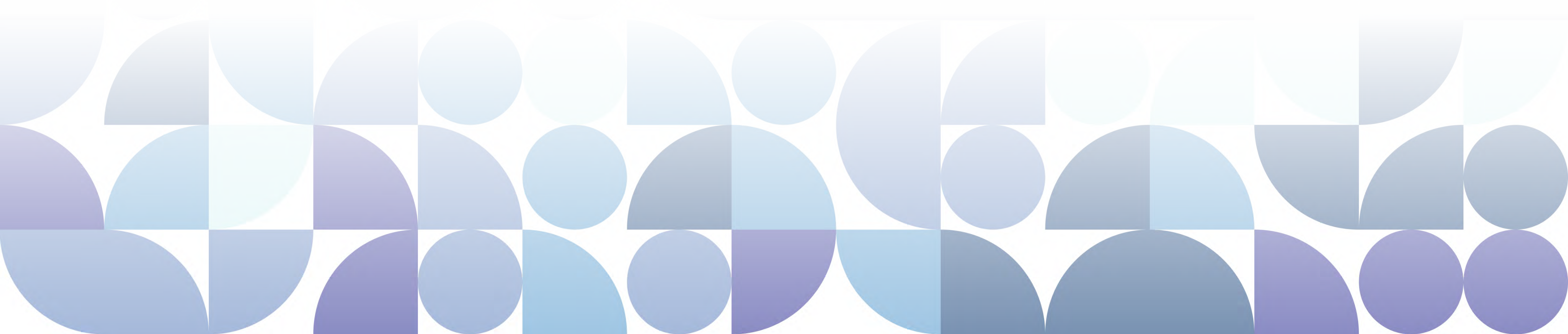


Key Features Include:

- Mini-roundabout junction
- Courtesy crossings
- Loading bays
- Bus stop build-out/ boarder

Summary:

- This scheme option for a mini-roundabout will act as a speed reduction measure for the town square and improve the priority for vehicles exiting Silver Street.
- Complementary measures will benefit pedestrians, bus users and deliveries



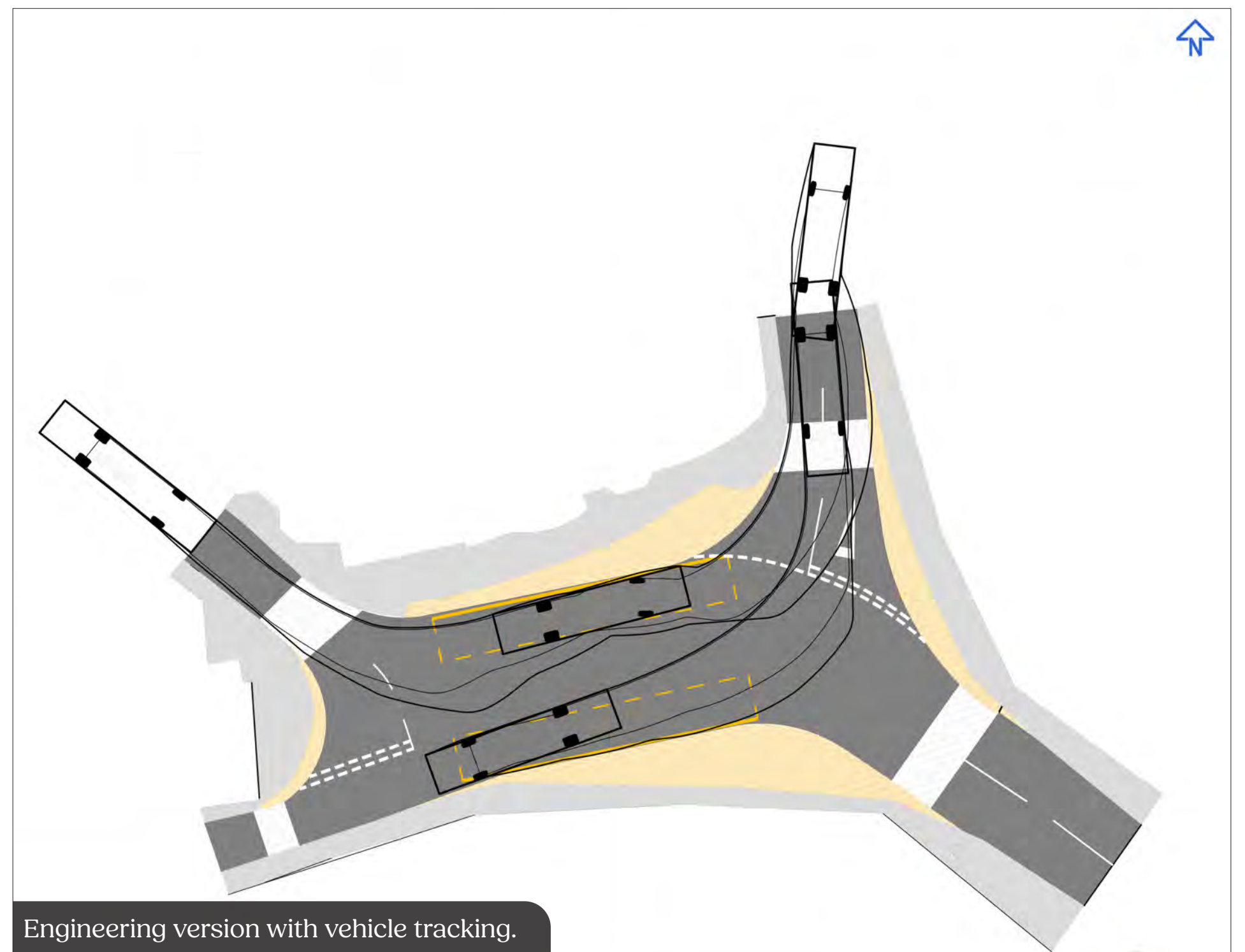
Ottery St. Mary Public Consultation

Town Square Enhancements

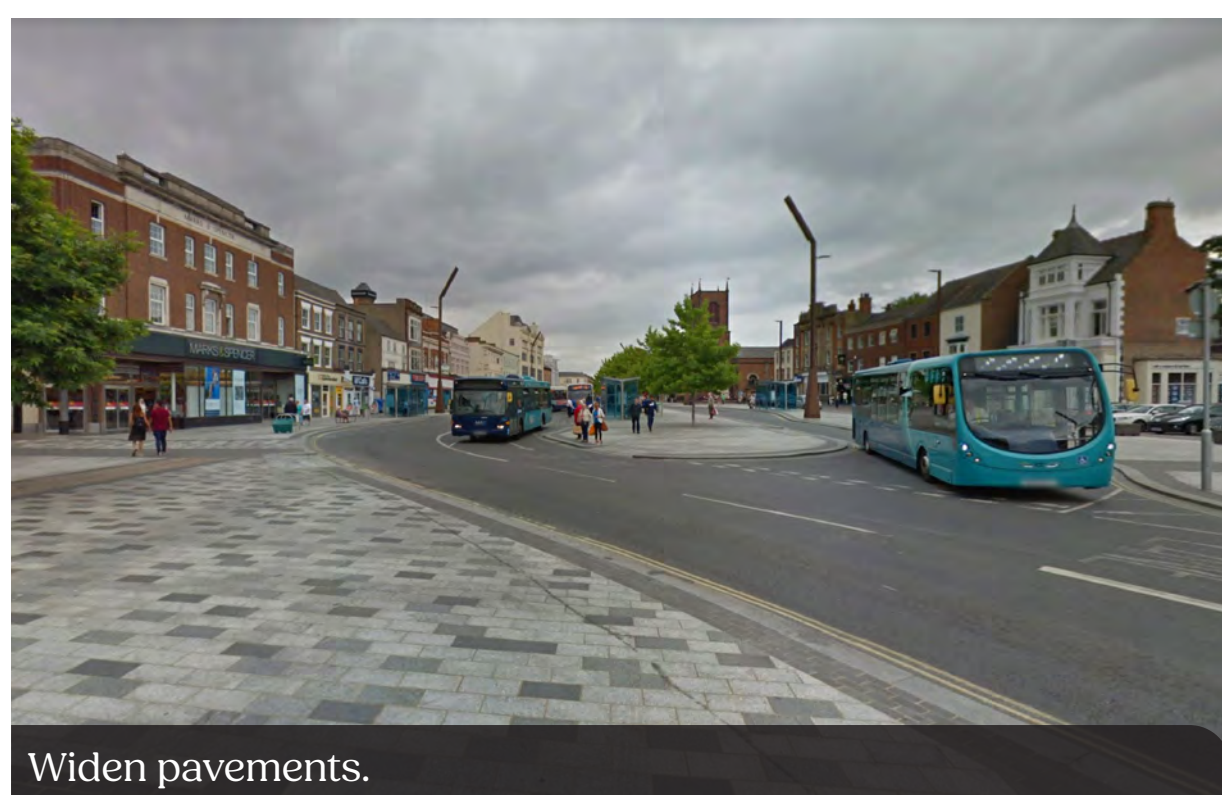
Option 2:



Option 2 illustrative plan.



Engineering version with vehicle tracking.



Widen pavements.



Improved crossing points for pedestrians.



Space on the pavements for seating and more planting. Moveable during Tar Barrels event.

Summary:

- Reconfigure carriageway and kerbs to create more pavement space and reduce crossing distance for pedestrians
- Create four crossing points with continuous paving at each corner of the square
- Introduce seating and moveable planters to allow for Tar Barrels event
- Potential to resurface square with buff resin bonded gravel to create a different atmosphere
- Introduce hanging flower displays along Saddlers Lane and enclose commercial bins with timber storage to enhance the lane's appearance

Key Features Include:

- Courtesy crossings
- Widened footways
- Bus stop boarders
- Potential planting and seating





Ottery St. Mary Public Consultation Town Square Enhancements

Option 3:



Option 3 illustrative plan.



Engineering version with vehicle tracking.



New paving to enhance public realm.



Potential for new road layout.



Wider pavements with potential for street dining/cafes.

Key Features Include:

- 'Shared surface' style finish (potentially raised)
- Roundel style junction in order to smooth traffic flow and release bottleneck
- Narrowed carriageway
- Quality surface finishes
- Potential removal of road markings
- Relocate kerb lines to widen pavements giving more space and safety to pedestrians

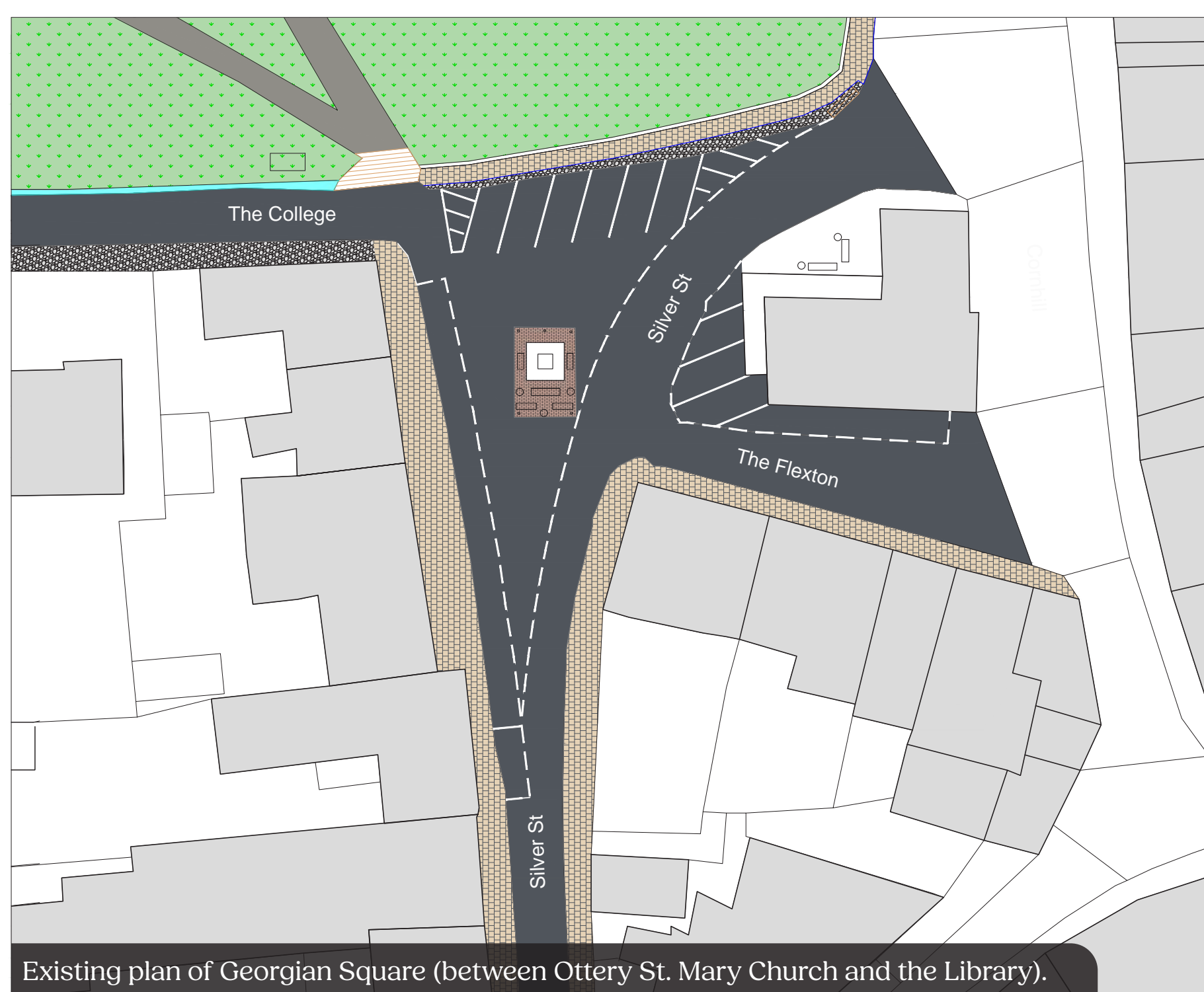




Ottery St. Mary Public Consultation

Georgian Square Enhancements

Existing Layout:



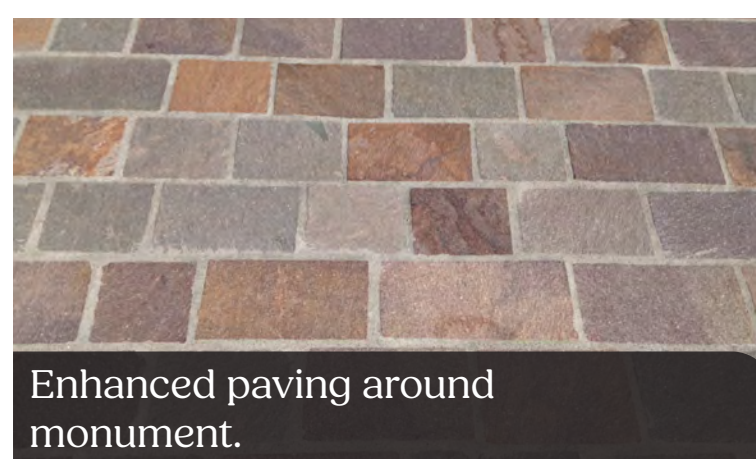
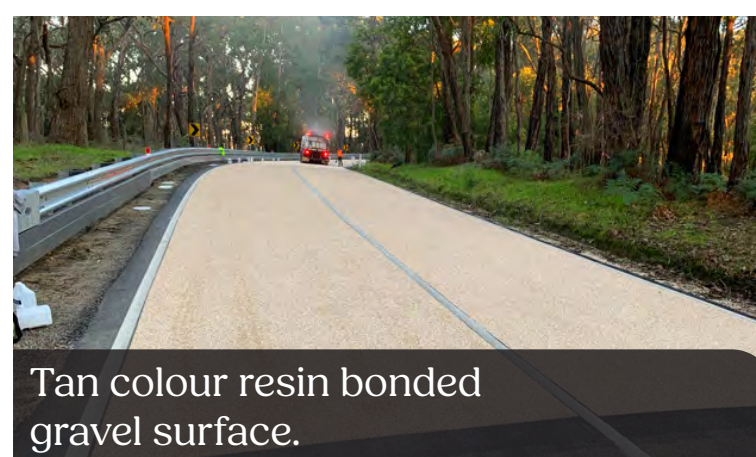
Issues to Address:

- Car parking
- Through traffic speeds
- Pedestrian movements/ safety
- Access to The College road
- Streetscape quality

Aims and Objectives:

- Enhance the setting of the memorial
- Increase footway space and crossing opportunities
- Enhance visual appearance & complement the historic character
- Manage through traffic

Option 1:



Key Features Include:

- Surface finish treatment to differentiate area around memorial from main through route
- New paving surface around Jubilee Monument
- Street Planting, Street Furniture and Bollards reviewed and rationalised
- New Posts with hanging floral basket display along Silver Street



Ottery St. Mary Public Consultation

Georgian Square Enhancements

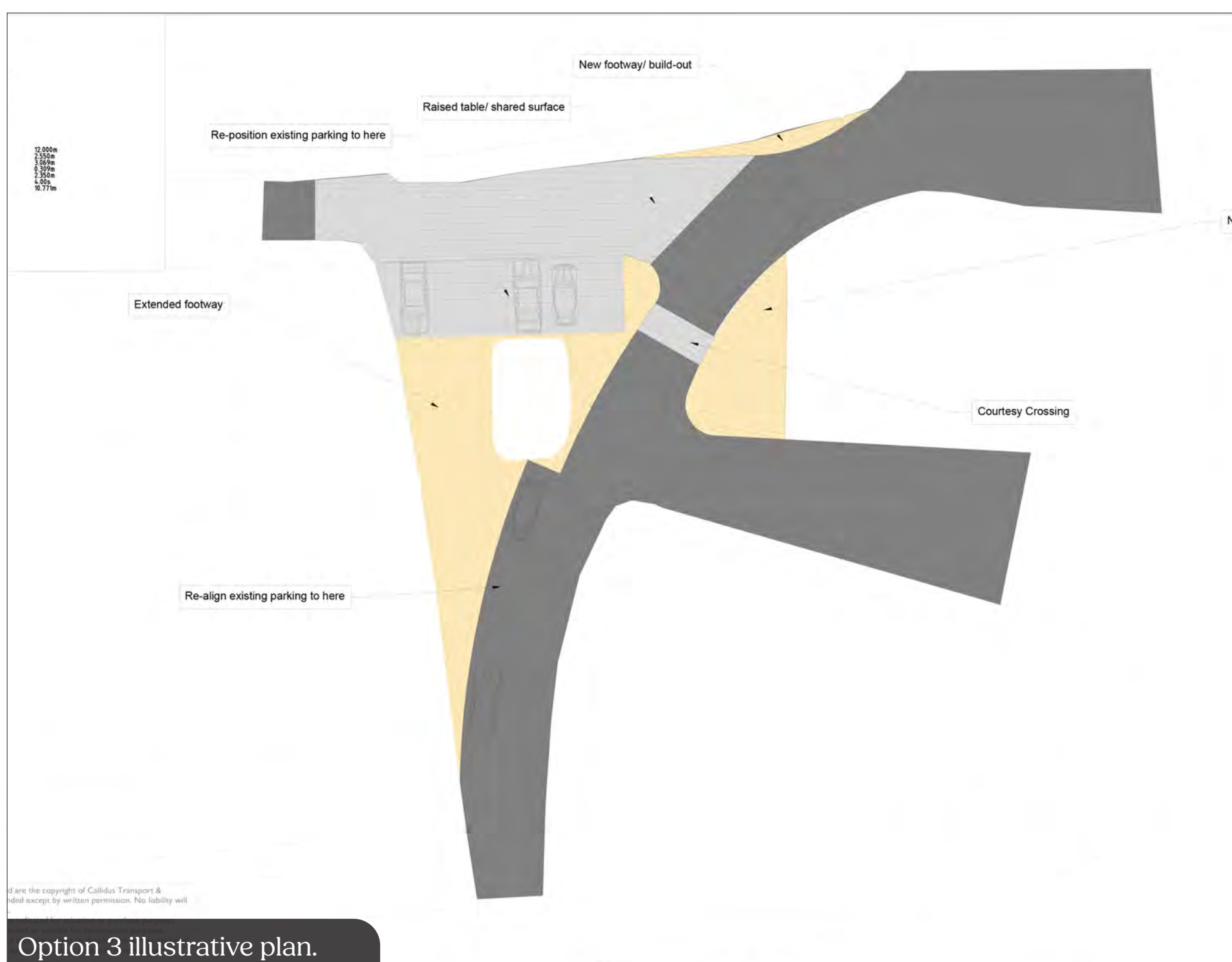
Option 2:



Key Features Include:

- Re-position of parking at end of The College
- Kerbed pedestrian paved area around the memorial
- Kerbed pedestrian paved area on west side of Heritage Museum
- Car parking along Silver Street realigned (possible loss of one or two parking bays)

Option 3:



Key Features Include as for Option 2 Plus:

- Block paved surface to The College and raised to near footway level
- Build and localised widening of footway on southside of church, including repair of retaining to the footway
- Courtesy crossing to Heritage Museum
- Build and localised widening of footway on southside of church, including repair of retaining to the footway





Ottery St. Mary Public Consultation

Georgian Square Enhancements

Option 4:



- New space will be terraced to create largely flat areas suitable for a variety of uses. Stepped access to other levels will provide opportunities for new seating and planting
- Leat alongside churchyard to feed into cascading raingarden planters which frame the public space.
- Remove eight parking spaces to create a high quality public realm which enhances the church and Jubilee Monument setting, creates space for events and outdoor dining and allows space to sit and enjoy being in the historic town centre.



New paving and planting to enhance monument.



New planting and paving within public space.



Option 4 - Artist's Impression



Ottery St. Mary Public Consultation

Safer Walking Routes

Ideas for Otter Nurseries Footpath Connection:



Potential new pedestrian routes from the town to Otter Nurseries, Joshua's, The Aquatic Centre and Gosford Farm Shop have been researched and are illustrated on this adjacent plan.

The pavement alongside Butt's Hill ends leaving 580m of two way roadway to be navigated by pedestrians, with fast moving and often large vehicle traffic. Adjacent hedges and ditches leave no space for a new footpath, so alternatives have been considered as shown.

Both potential routes would require use of existing fields to provide space for a new path. This could be a simple self binding gravel path around 2-3m wide.

Linking from the east side of the town and utilising existing public open space and the football ground, a new route

could potentially route north across 2-3 further fields, before connecting through Otter Nursery car park green space leading to the main entrance.

A second option aligns more to the core of the town and would begin on North Street using space within fields adjacent to Butt's Hill to connect to an existing public right of way footpath, before entering the Otter Nurseries site. Potential conflicts with the service yard would have to be resolved to make this safe, before the path follows an existing pavement top the western car park and entrance to Otter Nurseries.

Also highlighted on this plan is a proposed location for a residents car park which could help to resolve the current bottleneck on Butt's Lane caused by on street parking and high traffic movements.



Looking north towards Otter Nurseries where pavement ends.



Fields adjacent to road which could offer footpath potential.



Current on street parking on North Street/Butt's Hill, reduces available carriageway to one lane.

Town Centre Alleyways Enhancements:

Existing Issues:

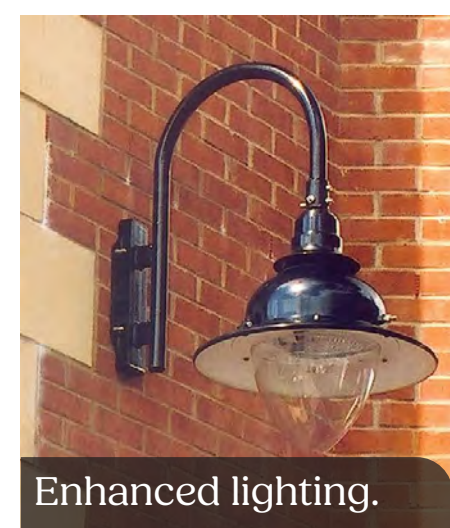
- Visitors may not realise alleyway links exist.
- Distracting appearance (cluttered, bins, unlawful parking).
- Potential unsafe feeling, especially after dark.



Hanging baskets.



Painted directions.



Enhanced lighting.



Colourful graphics.

Potential Interventions:

- Enhance lighting to help create a safe, inviting space.
- Add hanging flower baskets.
- Colourful painted graphics such as lines or patterns which spill out onto the adjacent pavement at each end.
- New prominent signage, with big arrows pointing into the lanes.
- Include a map showing where the shops are located.
- Ensure sufficient lights to increase safety at night.
- Add hanging flower baskets and ensure clutter kept at bay to create an inviting route.



Potential Tar Lane concept sketch.



Ottery St. Mary Public Consultation

Safer Walking Routes

Controlled Crossings:

Issues to Address:

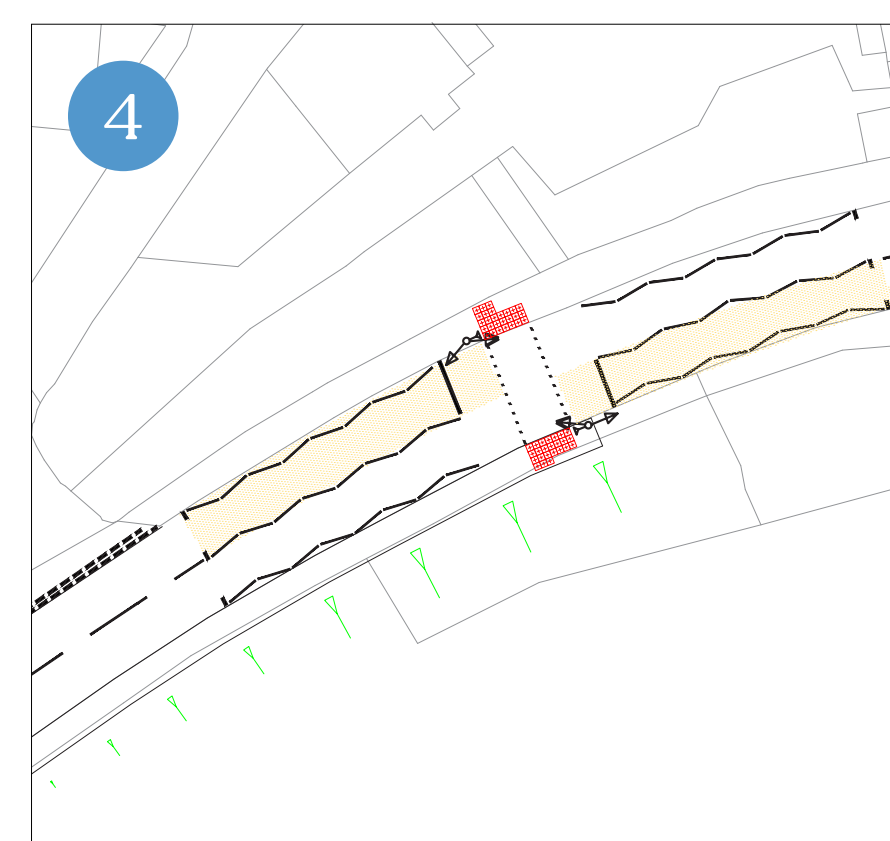
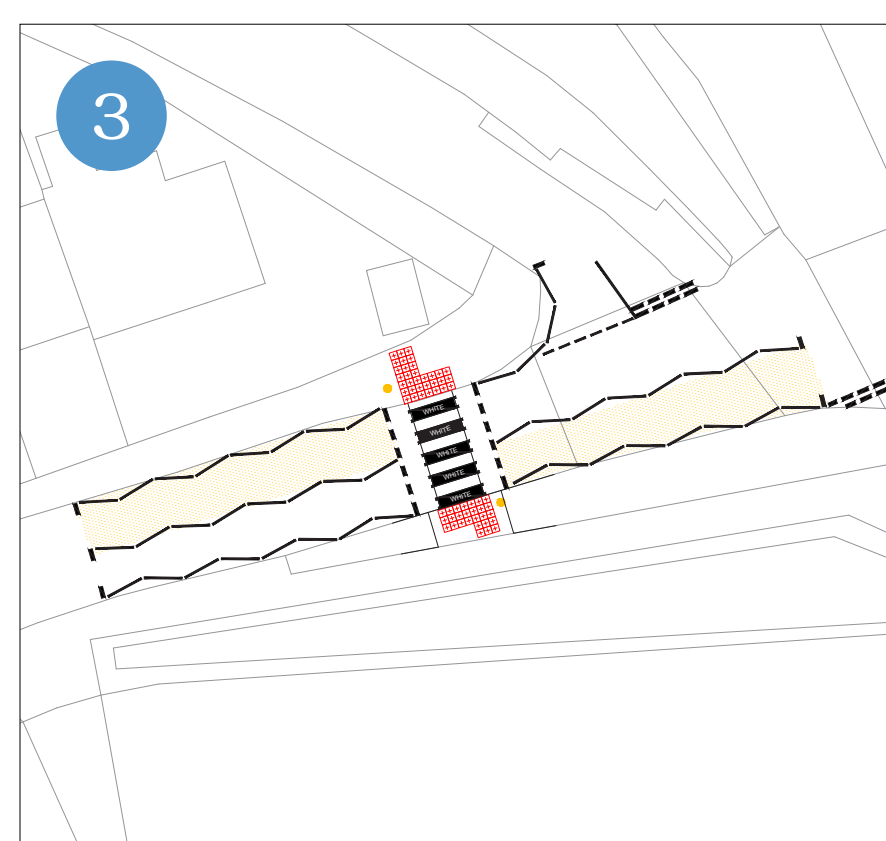
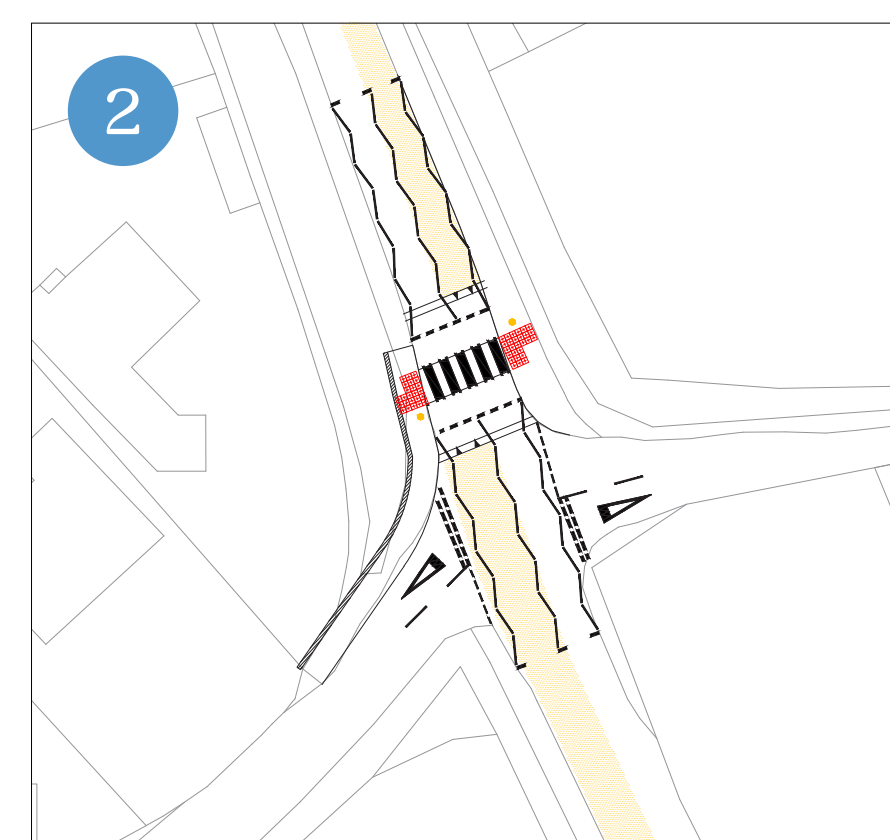
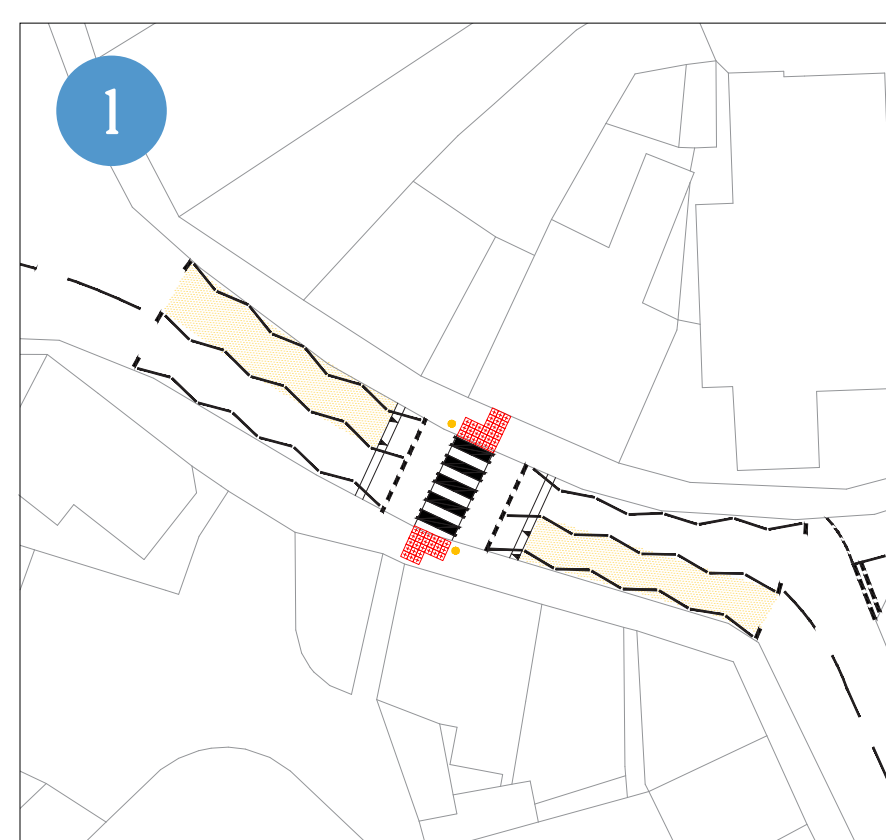
- Safety at key desire lines for vulnerable road users
- Raise conspicuity of crossings
- Satisfy key desire lines
- Gaps to links in the wider movement network
- Streetscape quality

Aims and Objectives:

- Improve road safety for vulnerable road users at key crossing locations
- Ensure crossing is safe for all road users
- Ensure crossing does not inhibit necessary traffic movements
- Provide connections to strategic links in the wider walking network

Schemes:

1. Broad Street, Jesu Street junction
2. Tip Hill, Longdogs Lane junction
3. Yonder Street, Spring Gardens junction
4. Barrack Road access to riverside



Uncontrolled Crossings:

Issues to Address:

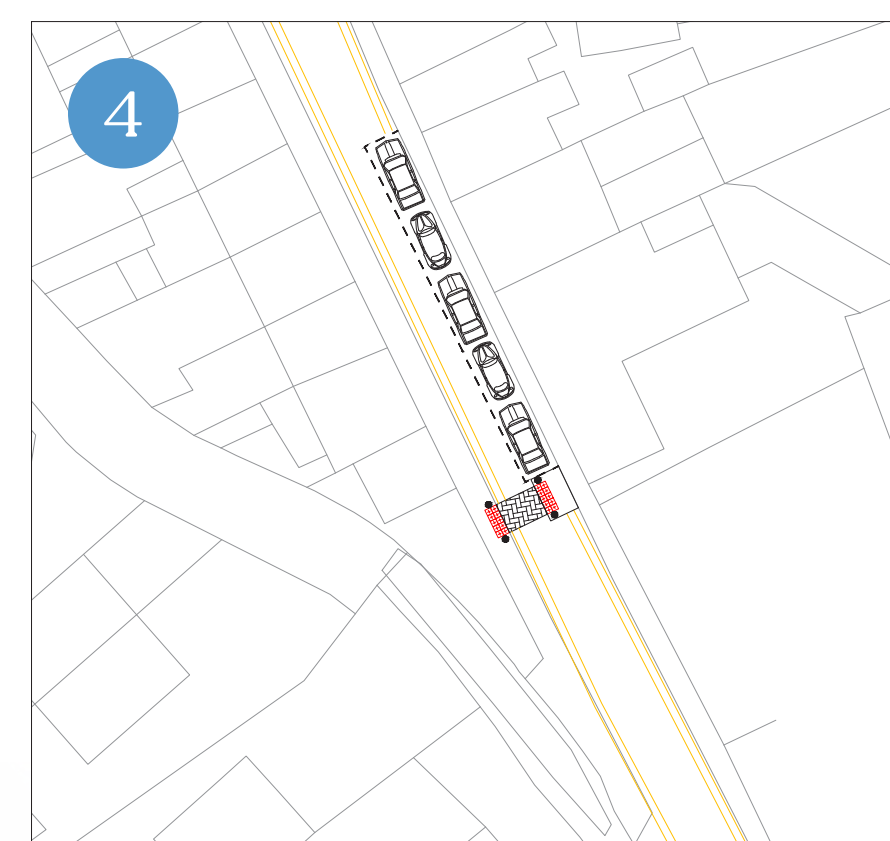
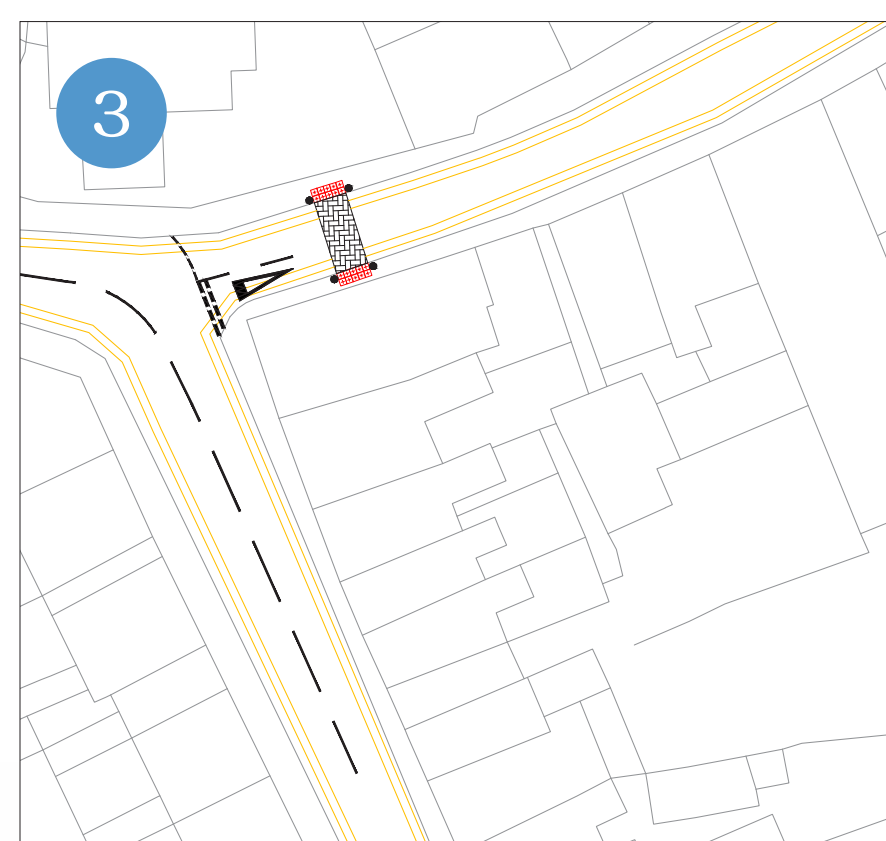
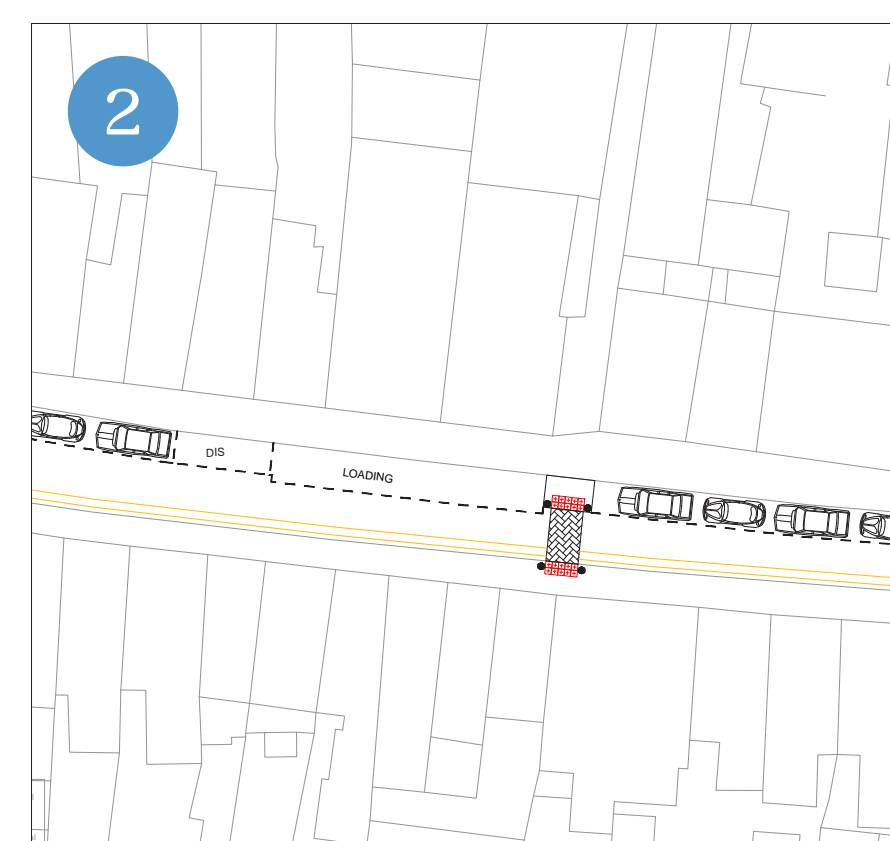
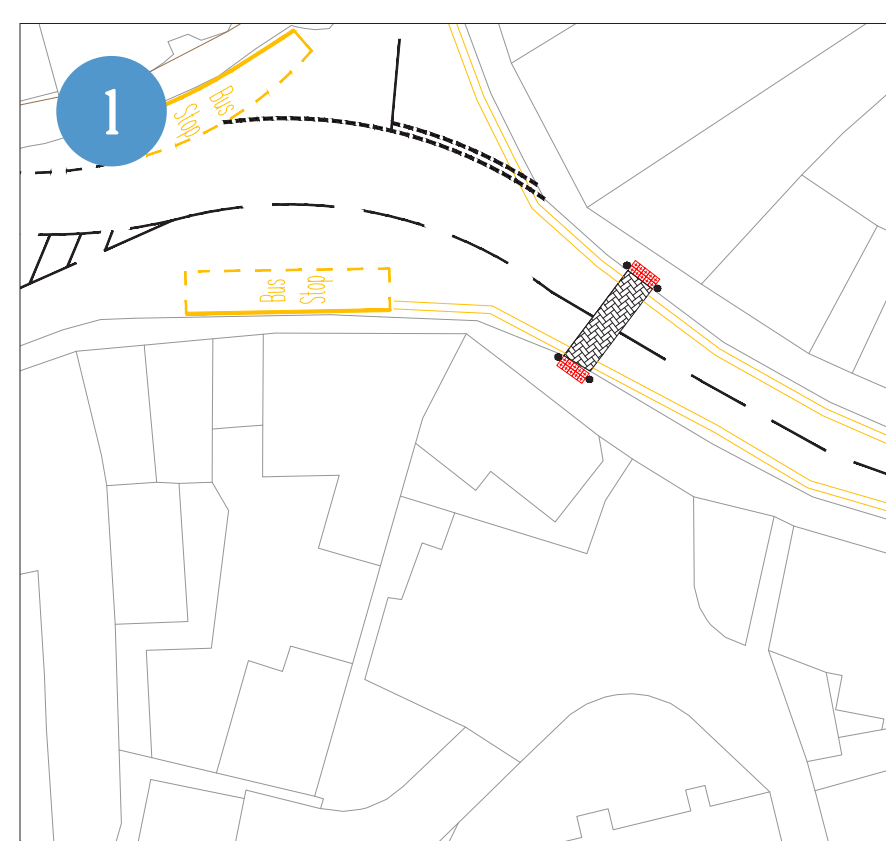
- Safety at key desire lines for vulnerable road users
- Satisfy key desire lines
- Gaps to links in the wider movement network

Aims and Objectives:

- Address specific locations that are difficult to cross and where a controlled crossing may not be justified
- Improve road safety for vulnerable road users at key crossing locations
- Ensure crossing is safe for all road users
- Ensure crossing does not inhibit necessary traffic movements

Schemes:

1. Broad Street, east side of Town Square
2. Mill Street to connect to pedestrian cut-through and crossing on Hind Street
3. Jesu Street near to the Coleridge Pre-School
4. Tip Hill prior to the end of the west side footway





Ottery St. Mary Public Consultation

Town Appearance and Landscaping

Existing Planters and Welcome Signs:

Ottery St Mary has a good amount of existing planting around the town and covering the town's gateways.

This consists of:

- Raised timber, plastic and metal planters
- Bulb planting
- Areas of shrub and herbaceous planting

Some of the planters are in need of refurbishment or replacement, and there is the opportunity to enhance the town's appearance through planting.

Potential to create a new colourful welcome sign which celebrates some of the features, history and culture of Ottery St. Mary, image 3 below.



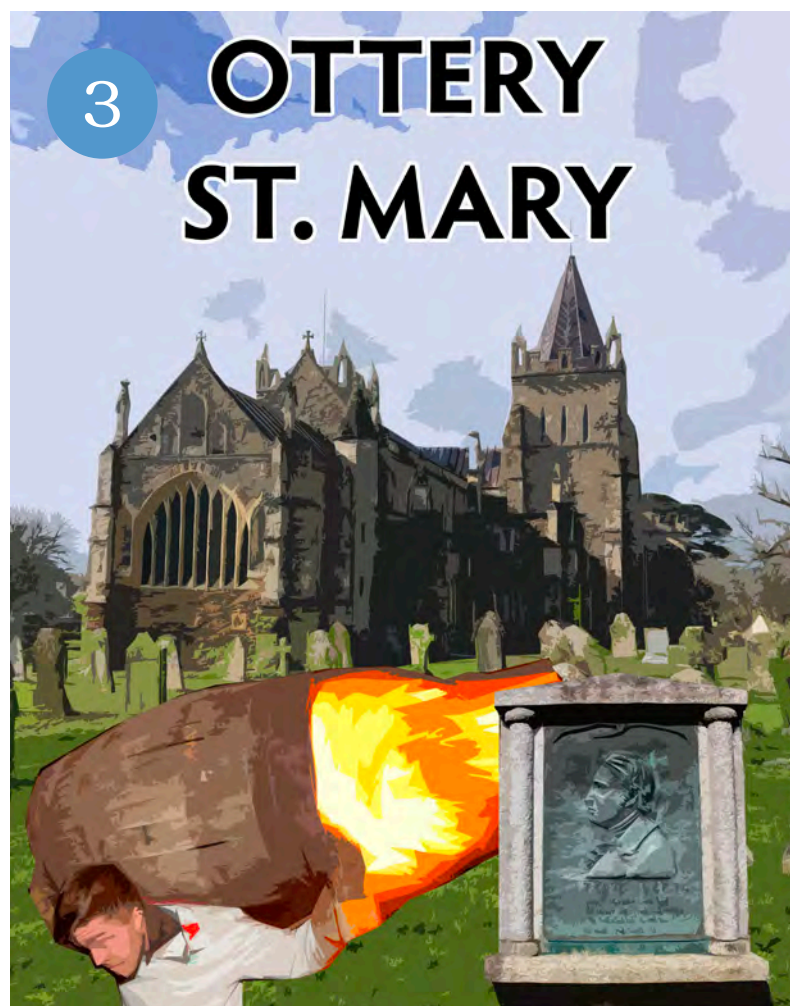
Existing welcome planter.



Existing welcome sign.



Existing planter.

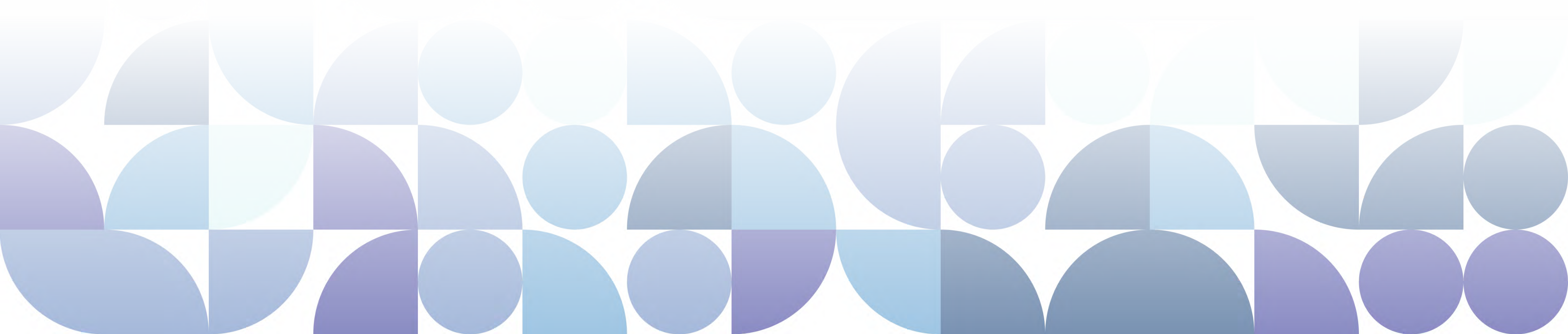
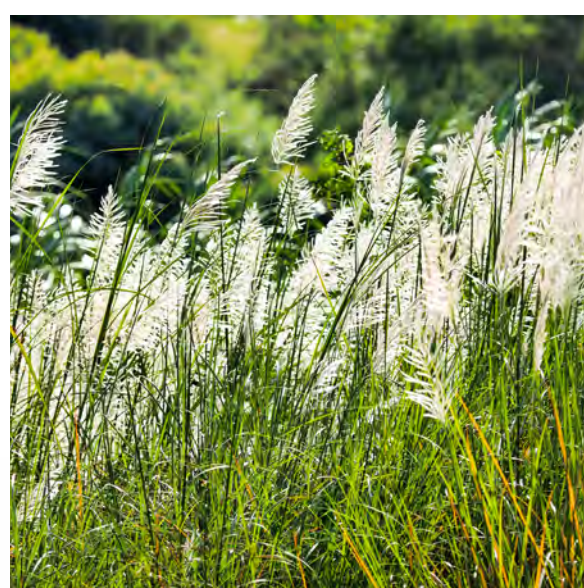
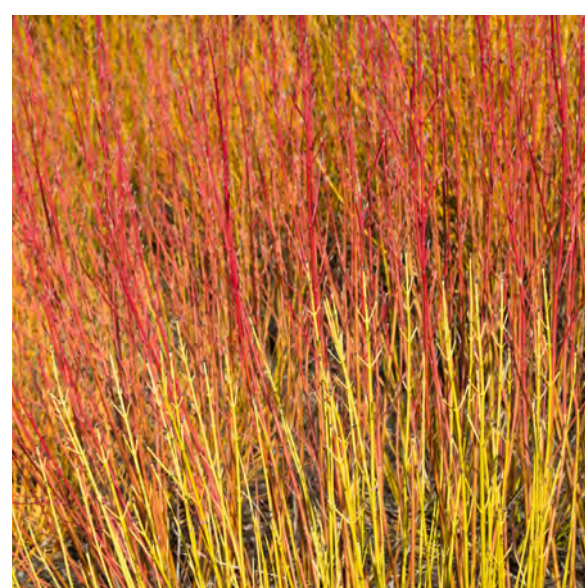
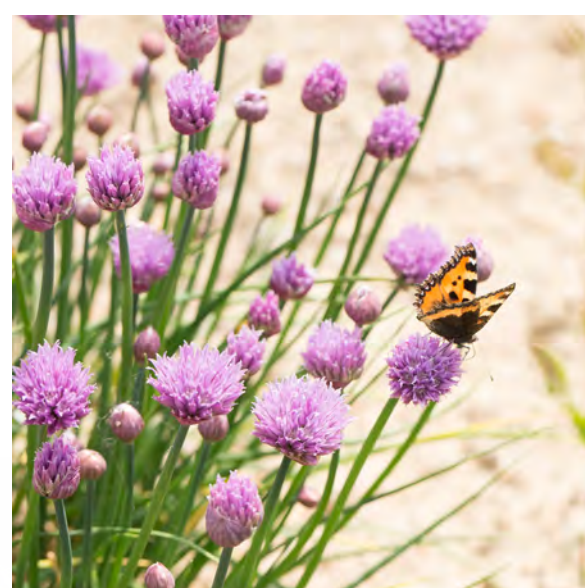
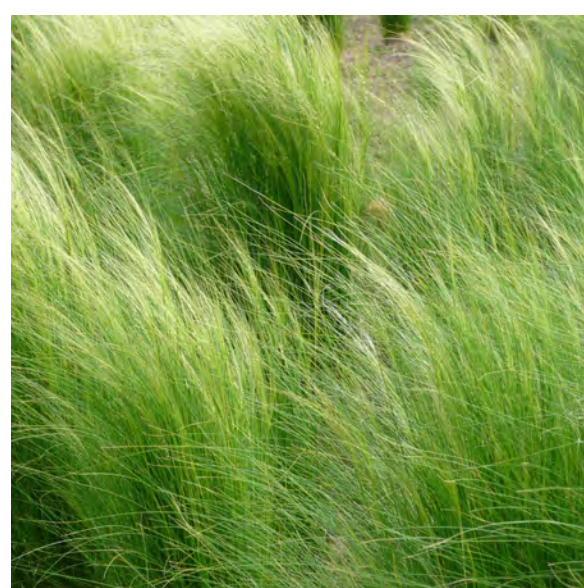


Images:

- 1 Photomontage of potential new welcome sign and planting on Exeter Road.
- 2 Photomontage of potential new welcome sign, planting and seating on Butts Hill.
- 3 Design idea featuring St Mary's Church, Samuel Coleridge and Tar Barrels Event.

Potential new plant mixture for Ottery St Mary could include:

- Ornamental grasses,
- UK Native bulbs,
- Plants for pollinators and
- Shrubs for year round interest





Ottery St. Mary Public Consultation

Other Priority Measures to Enhance the Town

Other Transport Strategy Measures:

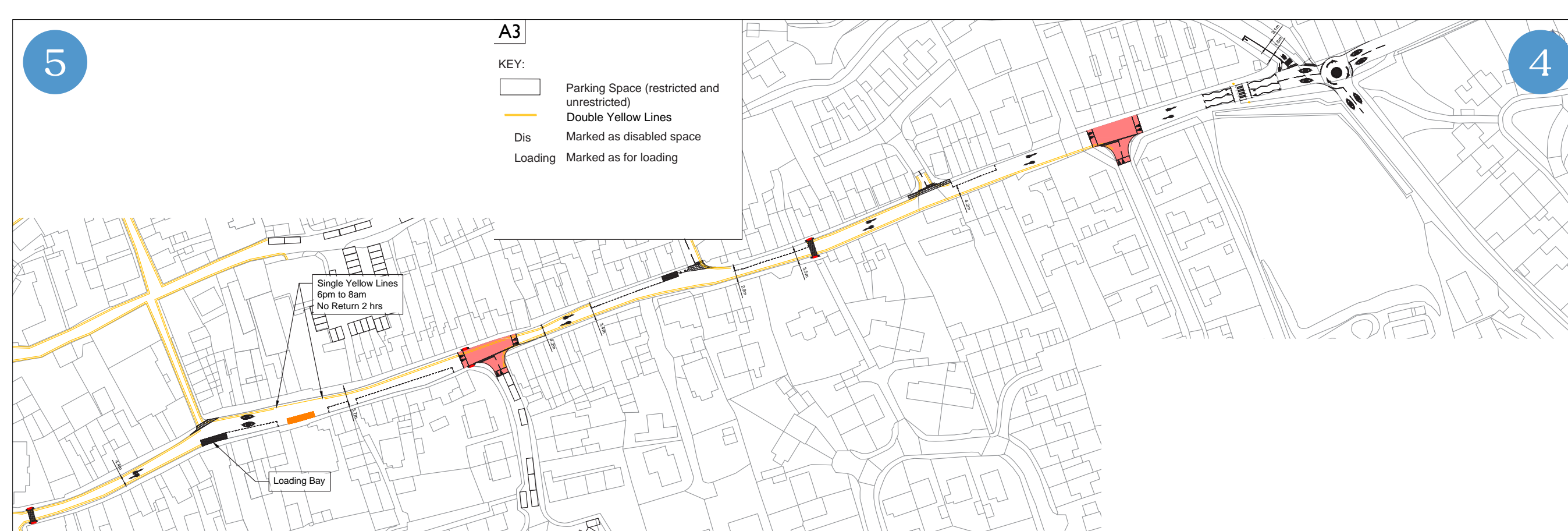
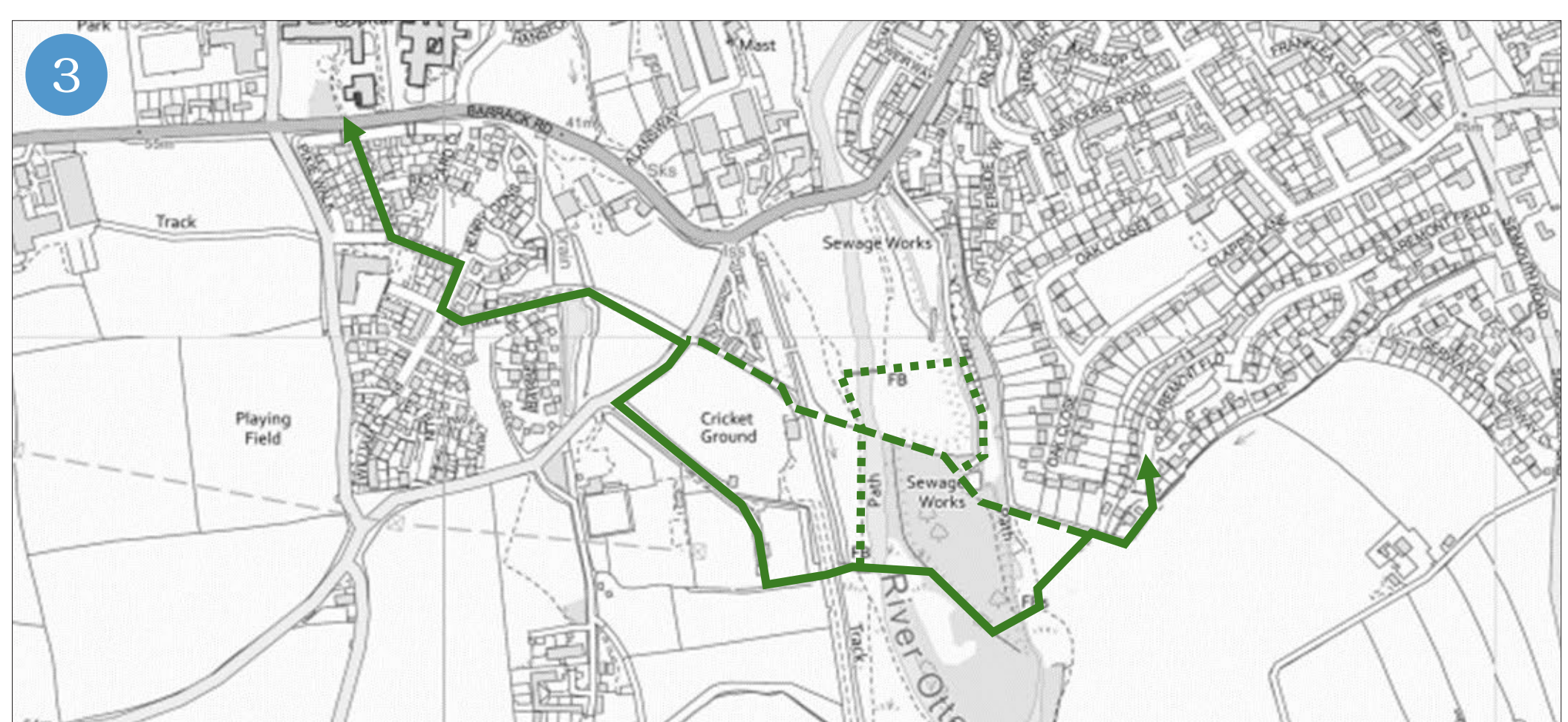
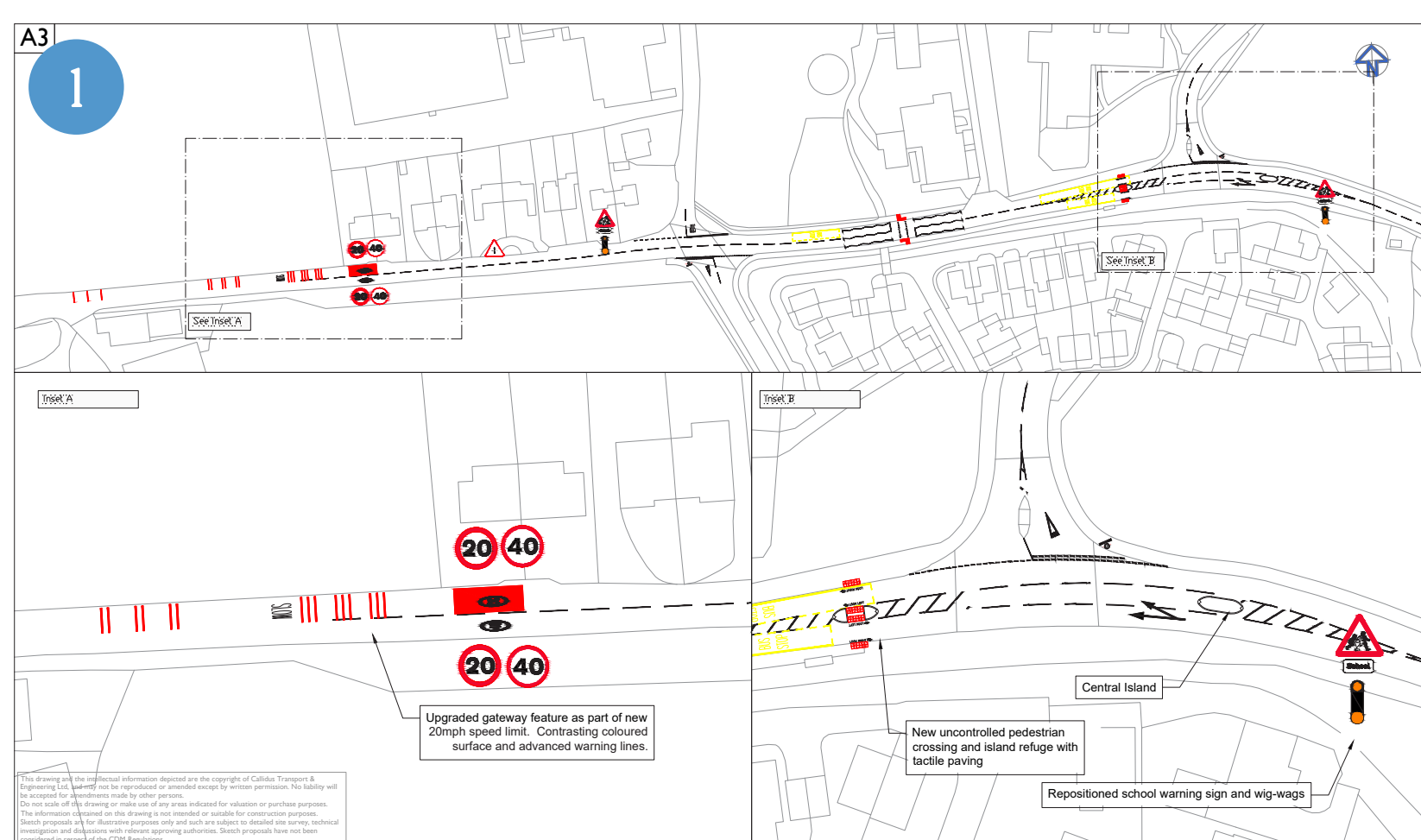
As part of the Transport Strategy for the town, we will also be incorporating other measures and initiatives including some of the following:

Schemes:

1. Barrack Road speed reduction measures
2. Gateway features on main roads into Ottery St. Mary
3. Southern pedestrian routes along the River Otter
4. Safer routes to Ottery St. Mary Primary School
5. Yonder Street corridor scheme

Initiatives:

- Wayfinding – pedestrian signing & maps
- Active travel – promotion of non-car modes
- Bus services – lobbying for service improvements
- School safety – physical and educational measures
- Cycling measures e.g. Sidmouth to Feniton Cycle Route, cycle parking, cycle hire



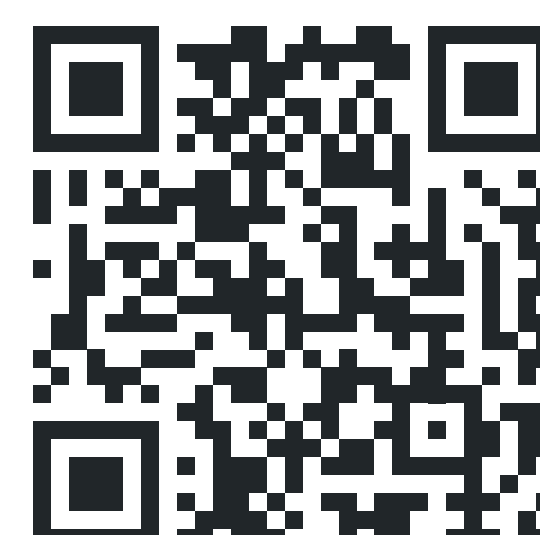
Next Steps:

After today's consultation event, we will be feeding back your views and comments to the Town Council. This will help to inform the finalisation of the Transport Strategy for the town.

The schemes identified will require further design work, will be consulted

on with those who may be effected and will require funding allocations.

We want to be aspirational but we also have to be realistic. Transport schemes can take time to deliver but without a plan and support from the community, nothing will happen.



If you would like to voice your thoughts and opinions on the options displayed, please scan this QR code to take part in our survey.

Thank you for your time and contribution.

